

N Scale Vehicle Association

"For the modeler and collector of 1:160 scale vehicles and equipment"

Easy 'N' Inexpensive
ways to extend the wheelbase of the
Woodland Scenics stake bed truck

Steps for extending the wheelbase of WS stake bed

Woodland Scenics' AutoScenes series includes a Cameo pickup, a wrecker and a stake bed all with the same chassis and 114 scale inch wheelbase as shown in Figure 1.

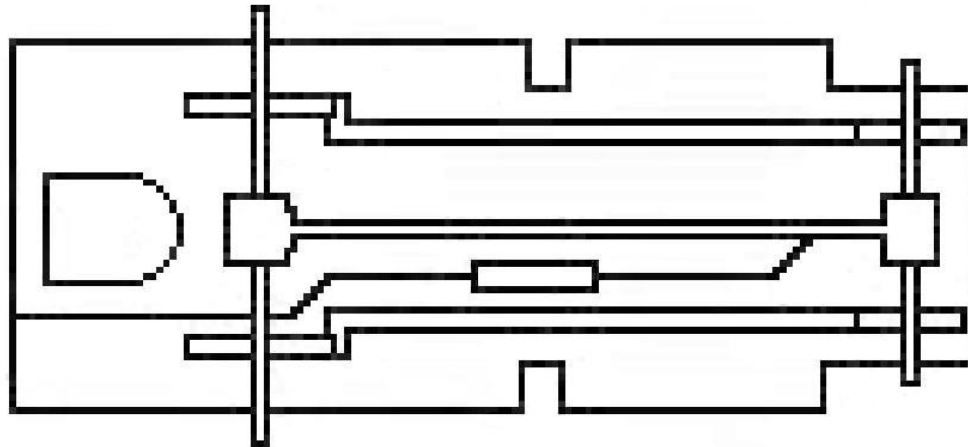


Figure 1 chassis before cutting (not to scale)

The 114 inch wheelbase is correct for the pickup, but it is too short for the 1-ton trucks. The wheel wells on the wrecker body make extending the wheelbase on that model a challenge. The stake bed truck on the other hand does not have any obstacles to prevent extending the wheelbase to 135 scale inches, a length that is appropriate for a mid-1950s General Motors 1-ton truck.

Steps for extending the wheelbase of WS stake bed (continued)

To fix the short wheelbase dilemma, all one has to do is to carefully remove the stake bed. An X-Acto No. 17 chisel blade inserted between the bottom of the stake bed and the chassis can be used to gently work the stake bed loose.

Once you have the stake bed separated from the cab and chassis, cut the chassis approximately 0.15 inches ahead of the rear axle (along the dotted line) slicing through the back end of the molded on muffler as shown in Figure 2.

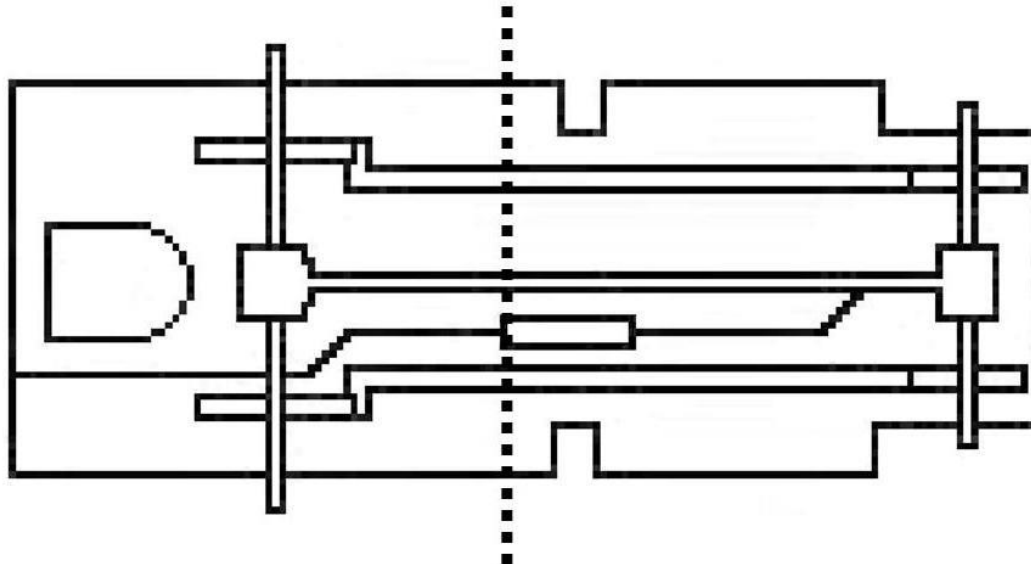


Figure 2 cut chassis along dotted line (not to scale)

Continued on next page

Steps for extending the wheelbase of WS stake bed (continued)

Once the cut is made as shown in Figure 3, rotate the rear section of the chassis 180° and attach the back section of the chassis to the front section of the chassis as shown in Figure 4 on the next page.

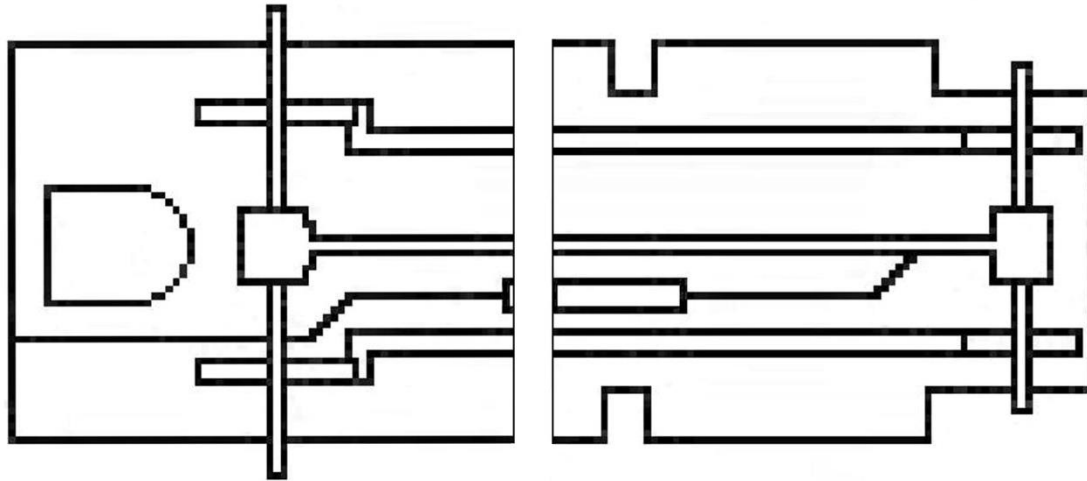


Figure 3 chassis sections after cutting (not to scale)

Steps for extending the wheelbase of WS stake bed (continued)

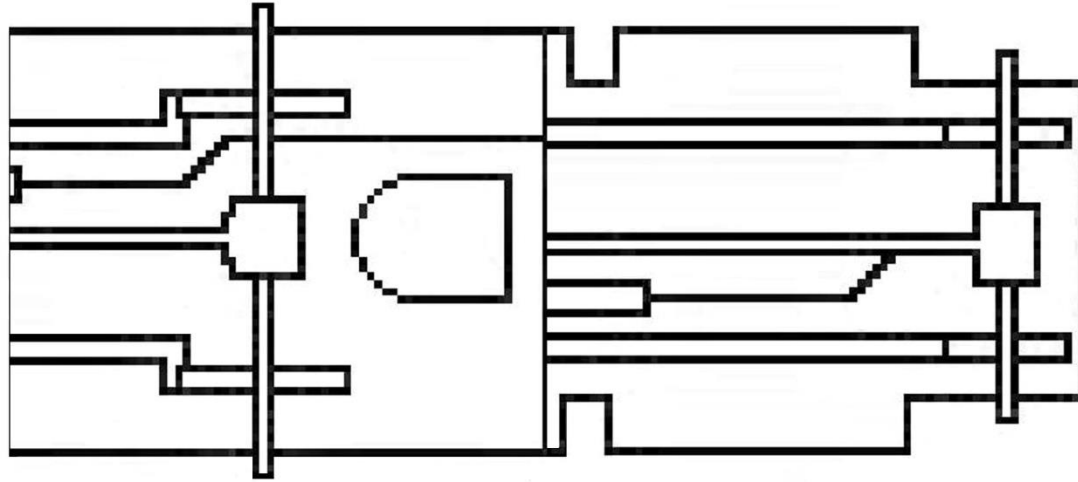


Figure 4 rear portion of chassis rotated and splice to create 135 inch wheelbase (not to scale)

The splice can be reinforced by gluing a strip of 0.25 inch wide by 0.04 inch thick Evergreen styrene. Cut a strip 6 scale feet long and center it along the length of the chassis where the stake bed will be reattached. Some filing between the supports of the underside of the stake bed will be necessary to allow the stake bed to fit snugly over the styrene strip.

Woodland Scenics stake bed Henry's Haulin' as delivered with 114 inch wheelbase



Woodland Scenics stake bed Henry's Haulin' as modified with 135 inch wheelbase



Challenges

Making sure everything lines up correctly when splicing the cab section to the rear section of the chassis.